

MONTHLY MEMBERSHIP PROGRESS REPORT

District 318 E

Results as of: 6/30/2024

GMT:

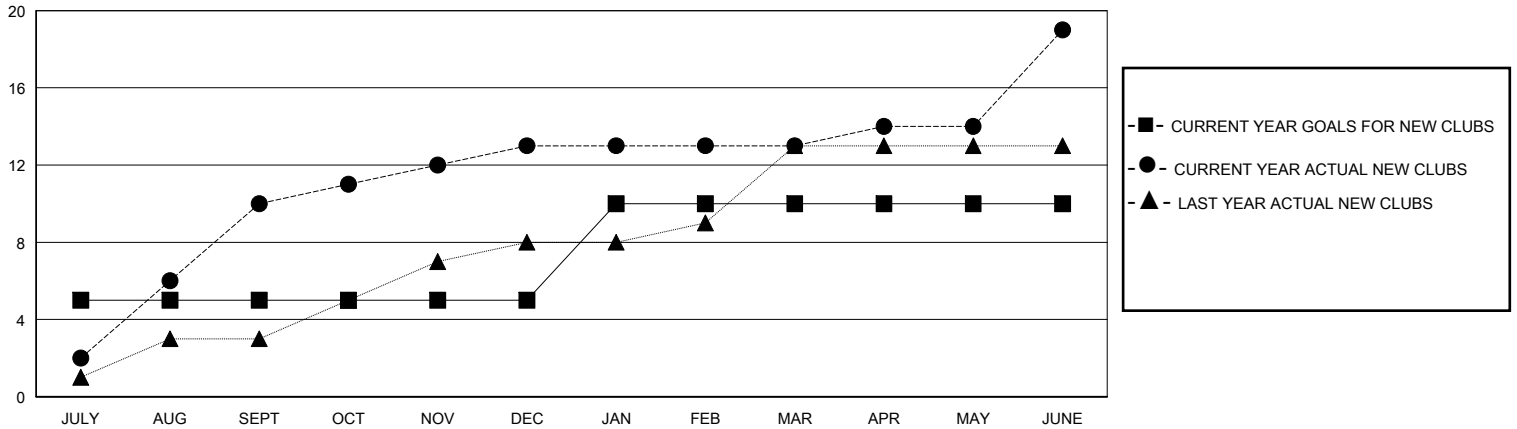
LOCATION INDIA

GMT CA

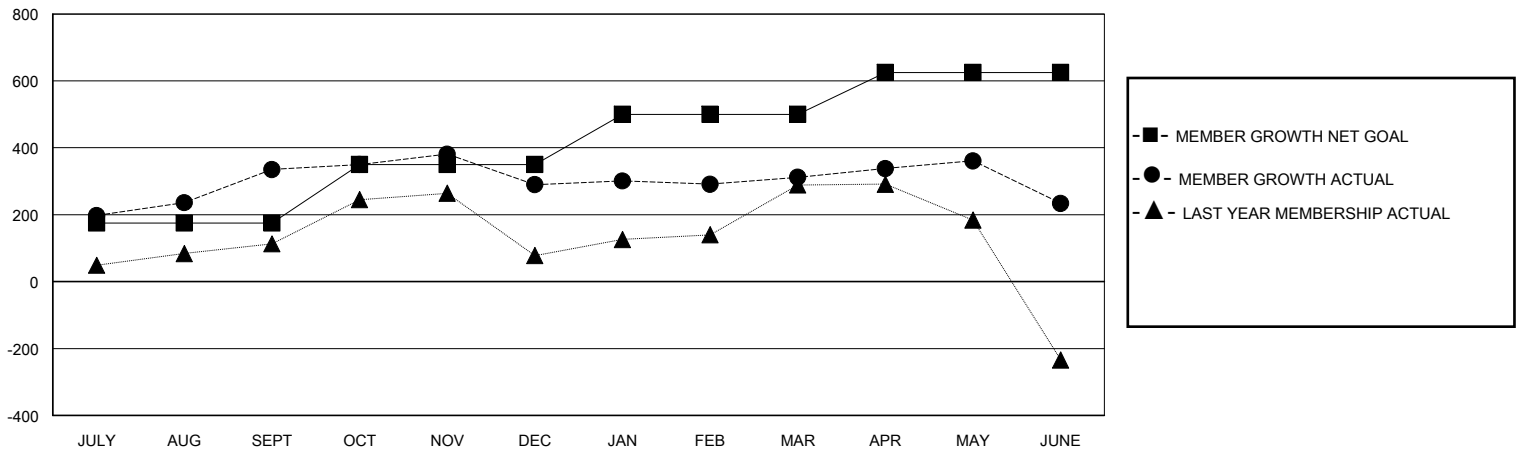
Clubs			
RESULTS FOR 2023-2024			
QUARTER	NEW CLUB GOAL	NEW CLUBS	DROPPED CLUBS
JULY/AUG/SEPT	5	10	2
OCT/NOV/DEC	0	3	3
JAN/FEB/MAR	5	0	2
APR/MAY/JUNE	0	6	3

Members			
RESULTS FOR 2023-2024			
QUARTER	MEMBER GROWTH NET GOAL	MEMBER GROWTH ACTUAL	DROPPED MEMBERS ACTUAL (including transfers)
JULY/AUG/SEPT	175	563	209
OCT/NOV/DEC	175	190	233
JAN/FEB/MAR	150	122	76
APR/MAY/JUNE	125	330	380

GOALS AND ACTUAL NEW CLUBS CUMULATIVE



GOALS AND ACTUAL MEMBERS CUMULATIVE



DROPPED CLUBS: 10	148 CLUBS OF 192 ADDED 1 OR MORE NEW MEMBERS	GENDER DISTRIBUTION
DROPPED MEMBERS		MALE 5,108 (80.03%)
DECEASED 21		FEMALE 1,275 (19.97%)
CLUB CANCELLED 111	CLICK HERE FOR CUMULATIVE MEMBERSHIP DATA	TOTAL FAMILY UNIT MEMBERS 2,138
OTHER 764		FAMILY MEMBERS PAYING HALF DUES 1,138
TOTAL 896		